



Wellness For All

Achieve Optimal Health



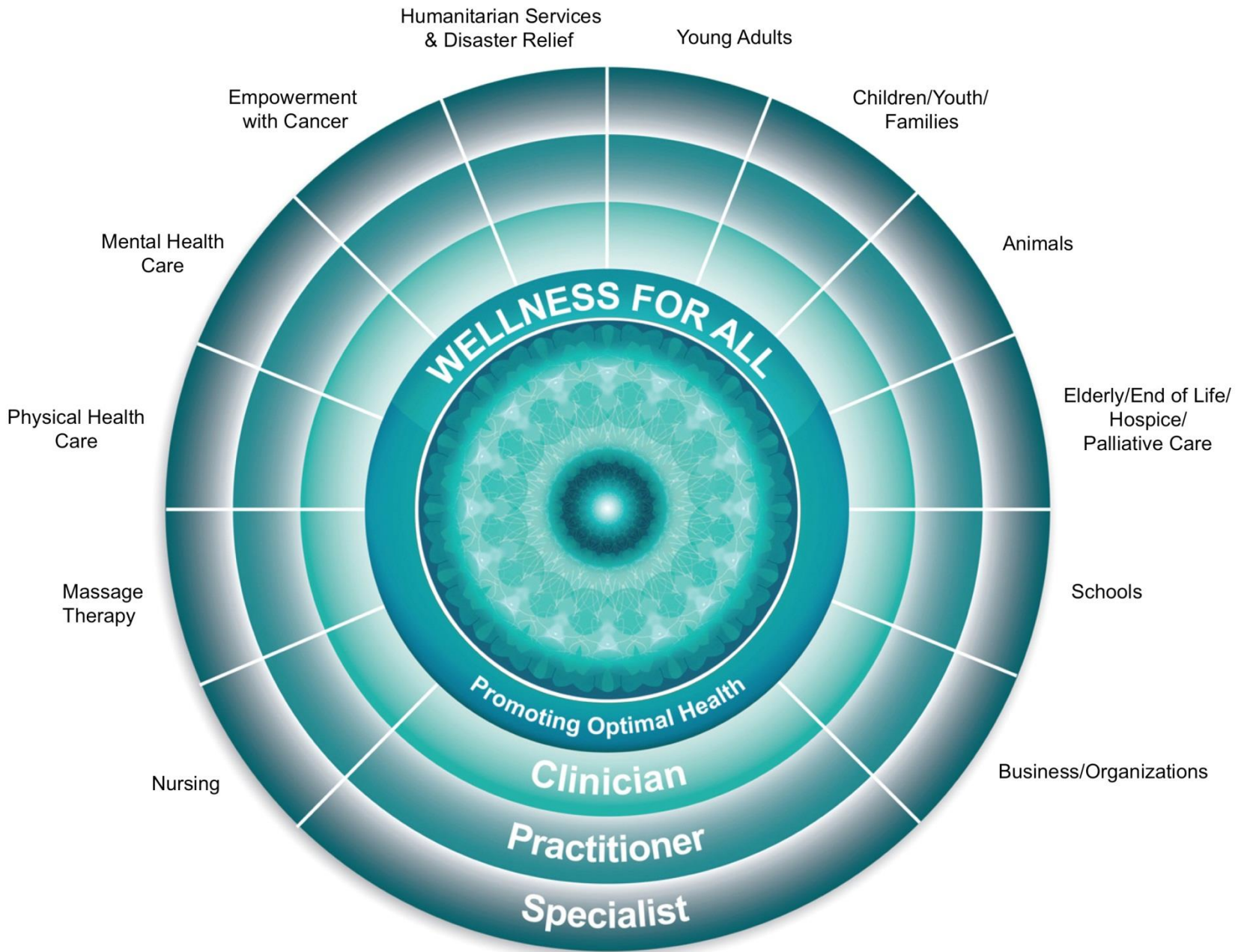




Wellness for All Model™



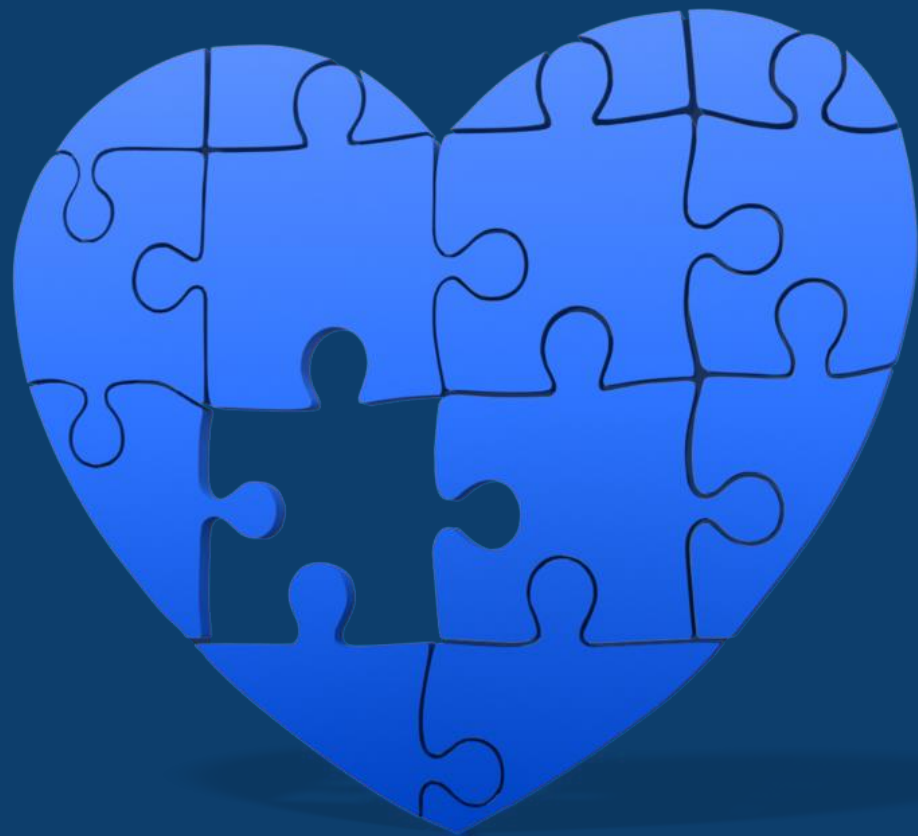
Wellness for All Model™



Wellness for All Model™

Wellness

Missing Piece



Co-Create Health

Wellness For All
is a partnership
with clients who
want to improve
their health.



Compliments Traditional Health Care





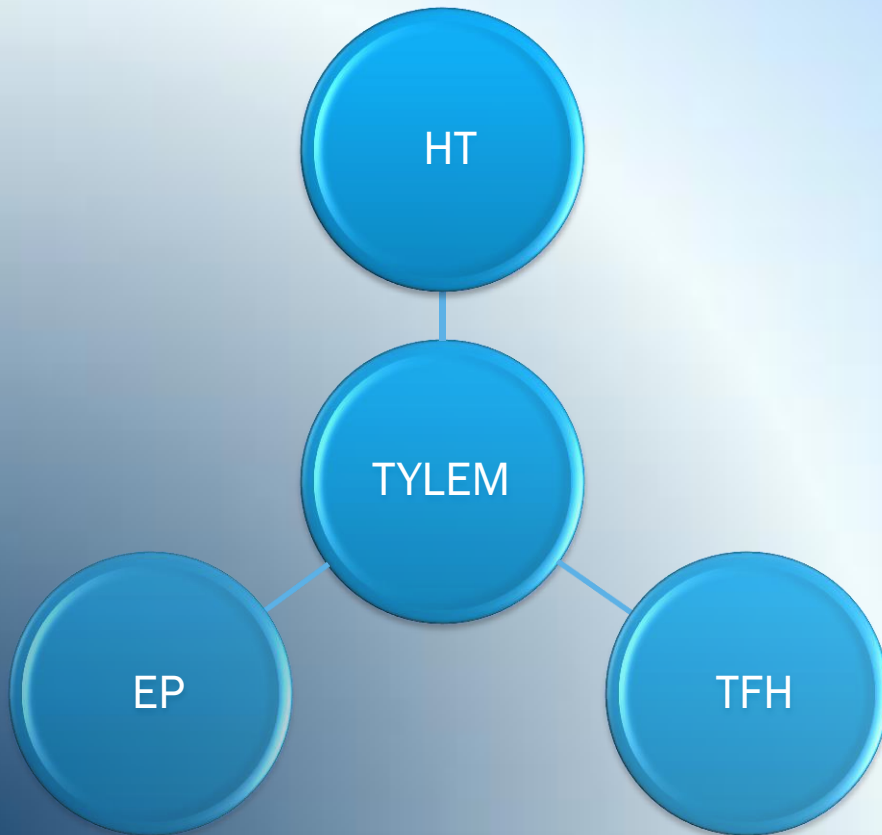
Settings for Care



Just as in traditional health care there are some standard procedures. In Wellness For All energetic assessments are done to identify body, emotion, mind and spiritual problems / issues



Home office or clinic setting with massage table. Client is treated with clothes on and usually shoes off. Procedure may be done standing. We are teaching individuals how to be their own health resource!



Energetic Interventions

A variety of sources are used for energetic interventions and teaching self care. The key programs that are used include: Transform Your Life through Energy Medicine (TYLEM), Healing Touch, (HT), Touch For Health (TFH) and Energy Psychology (EP).

Wellness For All Program Summary

Characteristics

- 1 Focus is Self Care
- 2 Empowerment of Clients
- 3 Easy and Powerful Interventions
- 4 Compliments Western Medicine

Comparison Page

How are they alike? How are they different?

Wellness For All

- Self-Care for Clients
- Holistic: Body, Emotion, Mind and Spiritual Integration
- Part of Health Care
- Assumes Responsibility with Client for Care
- Focus to Balance, Clear and Vitalize Energy
- Inexpensive
Compliment to Health Care

Traditional Health Care

- Practitioner Centered
- Mechanistic
- Part of Health Care
- Health Care Provider
Major Responsibility for Care
- Clinical Focus to Fix Broken Part
- Expensive for Practitioners and Service of Care



Alternative Solutions for Health Care

Creating Health through Empowered Clients!

Questions? Comments?

We are happy to help you!
Dr. Mary Jo Bulbrook, RN,
Program Director

www.energymedicinepartnerships.com
maryjo@energymedicinepartnerships.com



Headquarters
3211 Gibson Road
Durham, NC 27703

