

Study of the Effect of Welded Joints on the Mechanical Properties of Wrought (6063) Aluminum Alloy.

I.O. Oladele, M.Sc., J.A. Omotoyinbo, Ph.D., and B.O. Adewuyi, Ph.D.

Metallurgical and Materials engineering Department,
Federal University of Technology, Akure, Ondo State, Nigeria.

ABSTRACT

This work was carried out to investigate the effect of welded joints on the mechanical properties of wrought (6063) aluminum alloy. The alloy samples were welded at varying values of current and voltage after which mechanical tests were performed on the welded samples. The microstructural examination of the various fusion zones obtained was carried out. Appreciable variations in the properties of the welded samples were observed due to changes in the microstructural features of the alloys. It was concluded that variation of current and voltage remarkably affect the mechanical properties of the wrought 6063 Aluminum alloy.

(Keywords: welded joints, welding current, voltage, wrought 6062-Aluminu alloy, mechanical properties.)

INTRODUCTION

Wrought aluminum alloy is the term used for the alloy that is suitable for shaping by a working process such as forging, rolling and extrusion. Al-Mg-Si alloy is a typical example of wrought aluminum alloy widely used for structural applications with medium strength, (Anderson, 2002), (Bolton, 1999) and (Flin, 1990).

The alloy of aluminum and copper are difficult to weld because of the high thermal conductivity, high thermal expansion and a tendency to give porous welds, (Robert,1994). The high thermal conductivity means that there is a high rate of cooling and so there is difficulty in heating up the parent metal round the weld zone to a high enough temperature to give complete fusion with the weld pool. The high coefficient of expansion means that significant residual stresses are produced as a result of the weld area expansion being constrained by the colder surrounding

parent metal. Porosity arises because the metal in the molten state absorbs hydrogen from the sources as the welding flame, fluxes and atmospheric moisture and when the weld cools, this hydrogen is released, (Bolton, 1999).

The weldability of aluminum alloys varies significantly depending on the chemical composition of the alloy used. Aluminum alloys are susceptible to hot cracking, and to combat the problem, welders increase the welding speed to lower the heat input (Wikipedia).

Aluminum alloys are readily available in various product forms. To establish a proper welding procedure, it is necessary to know the material properties of the aluminum alloy being welded. The 6xxx series alloys contain silicon and magnesium approximately in the proportions required for formation of magnesium silicide (Mg_2Si), thus making them heat treatable. It has good formability, weldability, machinability, and relatively good corrosion resistance, with medium strength, (Hirsch, 2004), (Polmear, 2004) and (*Jour. of the Inst. of Metals and Mater.*, 1991).

Metal inert gas welding is the most economic process for metal thicker than 6mm diameter. Control of penetration is difficult for thin gauge material. In the metal inert gas process a direct current (D.C.) arc of reverse polarity is struck between the work piece and a continuously fed aluminum wire which acts as both the filler and the electrode. Fluxes are unnecessary. The arc itself cleans the electrode and welds pool, whilst re-oxidation is prevented by a shield of inert gas which envelopes the area. Since the electrode is continuous, welding speeds are high with small arc size. Owing to the higher average rate at which welds can be completed, it is well suitable for the welding of aluminum (Khann, 1990) and (Lancaster, 1994).

In arc welding, the length of the arc is directly related to the voltage, and the amount of heat input is related to the current, (ASM Inter., 2003). It was for this purpose that the research work was focused on the variation effect of welding current and welding voltage on the mechanical properties of wrought (6063) aluminum alloy. The results from the research are to guide on the possibility of welding fractured wrought (6063) aluminum alloy in service and during fabrication.

EXPERIMENTAL PROCEDURE

Parent Material: The parent material used in this study was wrought (6063) alloy. The Composition analysis as revealed by ARL3460 metals Argon analyzer was as shown in Table 1.

Table 1: Chemical Composition of the Wrought (6063) Aluminum Alloy (in wt %).

Al	98.7745
Mg	0.5504
Si	0.4076
Fe	0.1970
Cu	0.1667
Mn	0.0142
Zn	0.0115
Cr	0.0144
Ti	0.0132
Ca	0.0006
Sr	0.0001

Welding Procedure: Ten samples each of tensile, impact and hardness were prepared while five samples were prepared for microstructural examination. The samples for tensile, impact and hardness were divided into five sets of which four sets were cut into two parts and welded together at the chosen welding current and voltage. The material was machined on the lathe machine into tensile and impact samples while hand hack saw was used to prepare the hardness test and microstructural examination samples.

The samples for tensile, impact and hardness tests were divided into five sets (two samples for each variable) for the various welding conditions. All the samples except the control sample for each of the tests were cut into two and welded together by metal inert gas welding process. The welding equipment used for the research work

was MACRO HF MIG, 50 HZ and electrode. Before welding, the edges of the test piece to be joined were prepared by filling and cleaning of the surface to obtain a good weld. The selected Conditions for the welding operations are as follows:

At constant voltage; the welding current was varied as $I_1 = 75A$ and $I_2 = 100A$.

At constant current; the welding voltage was varied as: $V_1 = 25V$ and $V_2 = 30V$.

In order to obtain a stable arc, good protective atmosphere, and reduce spatter, welding was first carried out on a rough sample before transferring it to the work piece.

Mechanical Tests:

i Tensile Test - The welded samples were tested for tensile strength using the Monsanto tensile machine. The edges of the test samples were fitted into the jaws of the testing machine and subjected to tensile stresses until the sample fractured. During the test, the various stress-strain diagrams were drawn for each of the sample from where the tensile load is determined. This is used in determining the strength and stiffness of the materials.

ii Impact Test - The impact test was carried out using the Charpy impact machine. The test piece is supported at each end while notched at the mid-point between the two supports. The notch is on the face directly opposite to where the pendulum strikes the test piece. The V-notch was 2mm deep and of angle 45° . The energy absorbed in breaking the test piece is measured in joules. The ability of the material to withstand the applied load is referred to as toughness.

iii Hardness Test - Hardness test was carried out using Brinell hardness testing machine. The surface was first polished and diamond indenter was used to make dent on the polished surface and the diameter of the dent measured.

iv Metallographic Examination - The microstructural details of the welded and the control samples were studied. The welded samples were carefully sectioned at the fusion zone and grinding was then carried out on emery

papers of progressively finer grade (40, 60, 400 and 600). The final polishing was carried out carefully to produce mirror like and ridges free surface. The samples were etched with 0.1 M concentration of hydroxide solution (OH)₄ with (x100) magnification.

RESULTS AND DISCUSSION

The Effect of Variation of the Welding Parameters on the Tensile Properties of the Samples: Figure 1 shows the Ultimate Tensile Strength results. It was revealed that samples that serves as the control has the best ultimate tensile strength of 150.42N/mm² followed by samples welded at current, I₂ = 100A with ultimate tensile strength of 131.15N/mm² which are more than the values obtained for current, I₁ =75A and voltage, V₂ = 30V with ultimate tensile strengths of 96.77N/mm²and 93.72 N/mm², respectively.

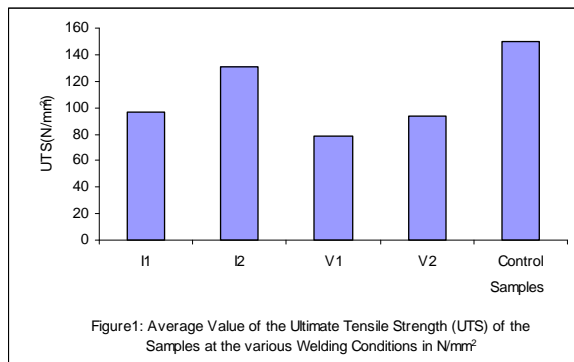


Figure1: Average Value of the Ultimate Tensile Strength (UTS) of the Samples at the various Welding Conditions in N/mm²

The Effect of Variation of the Welding Parameters on the Impact Energy of the Samples: From the result in Figure 2, it was observed that the impact strength of the control sample was the best with an average value of 26.04J while the welded samples have low impact strength with respect to the control. All the values fall within a close range the highest being that of V₁ =25V with an impact strength of 11.19J. This is a measure of the toughness of the materials.

The Effect of Variation of the Welding Parameters on the Hardness of the Samples: Figure 3 shows the hardness result. Samples welded at current, I₁ = 75A, V₂ = 30V as well as current, I₂ = 100A and have high hardness values of 35.40HBN, 33.90HBN and 31.05HBN respectively more than the control sample which has 28.10HBN. The hardness value is a measure of the resistance of a material to indentation.

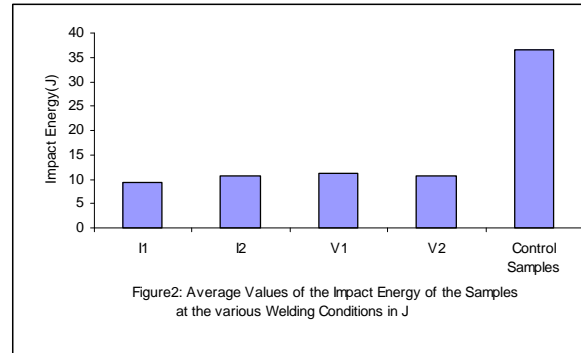


Figure2: Average Values of the Impact Energy of the Samples at the various Welding Conditions in J

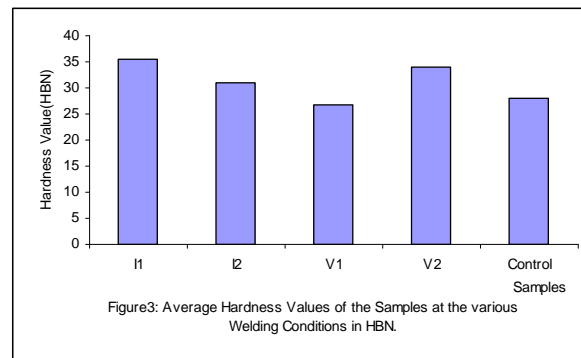


Figure3: Average Hardness Values of the Samples at the various Welding Conditions in HBN

The Effect of Variation of the Welding Parameters on the Microstructure of the Samples: The micrographs show the melting reaction of secondary Mg₂Si particles together with their surrounding Al matrix,(Polmear,2004). The general behavior of the different samples depend on the effect of precipitation that takes place at the micro structural level as shown in the plates below.

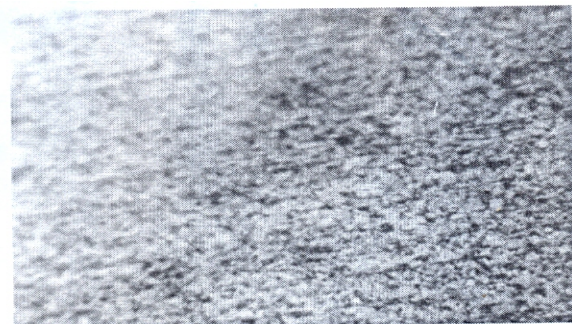


Plate 1: Micrograph of Welded Sample Subjected to Current I₁ = 75A Processing (x100).

In Plate 1, the micrograph of welded sample subjected to current $I_1 = 75A$ processing show fine grains of well diffused Mg_2Si compound in the Al matrix. These fine particles are responsible for the high and improved ultimate tensile strength and hardness values obtained in Figures (1) and (3) above.

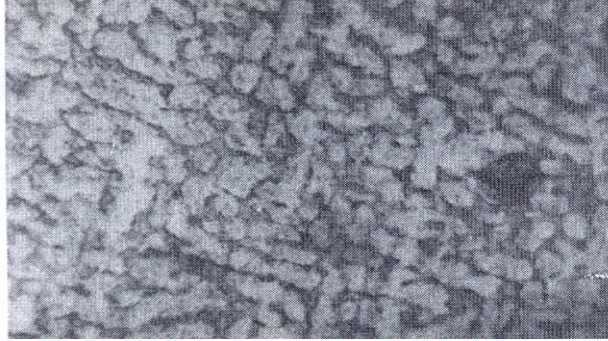


Plate 2: Micrograph of Welded Sample Subjected to Current $I_2 = 100A$ Processing (x100).

From Plate 2, the micrographs of welded sample subjected to current $I_2 = 100A$ processing show well diffused equiaxed compound of Mg_2Si in Al matrix. This structure also enhanced good mechanical properties for the sample in terms of the ultimate tensile strength and hardness values. These were shown in Figures (1) and (3) above.



Plate 3: Micrograph of Welded Sample Subjected to Voltage $V_1 = 25V$ Processing (x100).

The micrograph of welded sample subjected to voltage $V_1 = 25V$ processing in Plate 3 show high concentration of the Mg_2Si compound at different parts of the sample. There is no uniform diffusion of the precipitated compound and hence, the obtained ultimate tensile strength and hardness values are less than that of I_1 and I_2 . Figures (1) and (3) above show the values. However, it has

the best impact strength with respect to other welded samples.

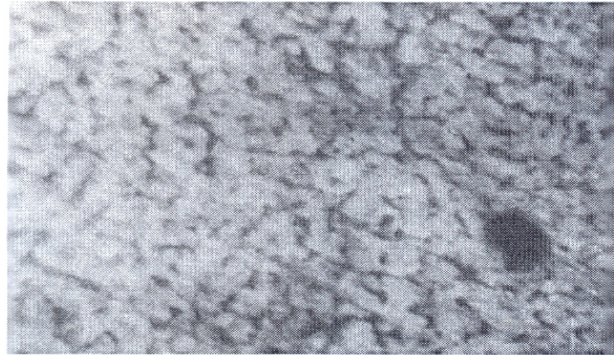


Plate 4: Micrograph of Welded Sample Subjected to Voltage $V_2 = 30V$ Processing (x100).

The micrograph of the sample welded at voltage $V_2 = 30V$ revealed the deposition of the precipitate of Mg_2Si in Al matrix at the grain boundaries with a cluster at a point close to the edge. This enhanced good ultimate tensile strength and hardness properties as obtained in Figures (1) and (3).

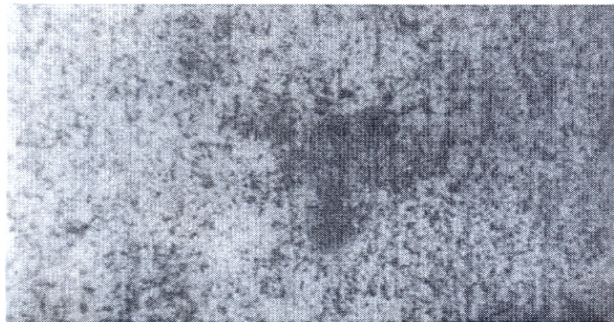


Plate 5: Micrograph of the Control Sample (x100).

Plate 5 is the micrograph of the control sample. It shows fine grains of well diffused Mg_2Si compound in the Al matrix. It possess the best ultimate tensile strength and impact strength with good hardness values as obtained in Figures (1) and (3) above. These fine particles are responsible for the good mechanical properties obtained.

At these welding conditions, it was observed that the wrought (6063) aluminum alloy that serves as

the control have the best ultimate tensile strength of 150.42 N/mm² and impact strength of 36.48J. The hardness value competes favorably with the hardness values from the welded samples as shown in Figure 3 above.

Samples that were welded at constant voltage and at current, 100A was observed to have the best performance close to the control sample with ultimate tensile strength of 131.15 N/mm², hardness value of 31.05HBN and impact strength of 10.58J. These were followed by those samples that were welded at constant voltage and at current; 75A. These has the best hardness value of 35.40HBN and comparable ultimate tensile strength of 96.77 N/mm² and impact strength of 9.36J.

Samples that were welded at constant current and 30V possess good hardness value of 33.90HBN and comparable ultimate tensile strength of 93.72 N/mm² and impact strength of 10.64J. However, the samples that was welded at constant current and at a voltage of 25V possesses the least values of ultimate tensile strength and hardness value results in comparison with the other samples except for the impact strength which is 11.19J. The ultimate tensile strength is 78.53N/mm² while the hardness value is 26.69HBN.

CONCLUSION

The results of the welding of wrought (6063) aluminum alloy with the above given chemical composition and welding conditions revealed that the control sample has the best overall mechanical properties with respect to the other welded samples. The results also show that;

- i Welding at constant voltage and at current $I_2 = 100A$, followed by welding at constant voltage and at current $I_1 = 75A$ gave the best mechanical properties in terms of ultimate tensile strength and hardness value close to the control.
- ii The impact strengths of the welded samples at the various welding conditions are low compared to that of the control sample as a result of the changes in the microstructural features of the alloy.
- iii As the voltage increases from 25V to 30V, the ultimate tensile strengths and

hardness values increases while the impact strengths decreases.

REFERENCES

1. Anderson, J.D., Jr. 2002. *The Airplane. A History of its Technology*. American Institute of Aeronautical and Astronautics: Reston, VA. 175.
2. ASM International. 2003. *Trends in Welding Research in the United States*. ASM International: Materials Park, OH. 995-1005.
3. Bolton, W. 1999. *Engineering Materials Technology*. Butterworth-Heinemann: London, UK. 387.
4. Canadian Welding Association. 2009. <http://www.cwa-ac.s.org/>
5. Flin, Trojan. 1990. *Engineering Materials and their Applications*. Houghton Mifflin Publishers: New York, NY. 400-405.
6. Hirsch, J. 2004. *Automotive Trends in Aluminium-The European Perspective*. Institute of Materials Engineering Australasia Ltd. *Material Forum*. 28:15-23.
7. Khann, O.P. 1990. *A Textbook of Welding Technology*. Dhapat Rai Publishers: New Delhi, India. 70-75.
8. Lancaster, J.F. 1994. *Metallurgy of Welding*. Chapman and Hall: London, UK. 298-314.
9. Polmear, I.J. 2004. *Aluminium Alloys-A Century of Age Hardening*. Institute of Materials Engineering Australasia Ltd. *Material Forum*. 28:1-14.
10. Robert B. Ron. 1994. *Metallic Material Specification Handbook*. Chapman and Hall Publisher: London, UK. 1-28.
11. The American Welding Society. 2009. <http://www.aws.org/>
12. *The Journal of the Institute of Metals and Materials*. 1991. 7(2):10-15,96-99.

ABOUT THE AUTHORS

OLADELE Isiaka Oluwole is a Master degree holder from Federal University of Technology, Akure. He is a Lecturer in the Department and he is a registered Engineer. He has many publications to his credit.

Joseph Ajibade Omotoyinbo holds a Ph.D. in Metallurgical and Materials Engineering from the Federal University of Technology, Akure and a Masters degree in Metallurgy from St. Petersburg State Polytechnical University, formerly Leningrad University, Russia. He is currently a Senior Lecturer at the Department of Metallurgical and Materials Engineering, Federal University of Technology, Akure, Nigeria.

ADEWUYI Benjamin O is a Ph.D. holder from Federal University of Technology, Akure. He is Reader in the Department, current Head of the Department, a registered engineer and a researcher in the area of materials development.

SUGGESTED CITATION

Oladele, I.O., J.A. Omotoyinbo, and B.O. Adewuyi. 2009. "Study of Effect of Welded Joints on the Mechanical Properties of Wrought (6063) Aluminum Alloy". *Pacific Journal of Science and Technology*. 10(2):120-125.

 [Pacific Journal of Science and Technology](http://www.akamaiuniversity.us/PJST.htm)