

5th Edition of
International Conference on
**Traditional Medicine,
Ethnomedicine and
Natural Therapies**

22-23 May, 2023

Tokyo, Japan

Venue:

Ana Crowne Plaza Narita 68,
Horinouchi, Narita-Shi, Chiba, 286-
0107, Tokyo, Japan

Welcome Message

Welcome to the 5th Edition International Conference on Traditional Medicine addressing Ethnomedicine & Natural Therapies. The conference provides international perspectives to improve the health and well-being from heart-centered approaches. The sessions address critical elements that impact individuals, families, community's worldwide restoring hope and promoting healing. Please come forward with your ideas and unifying suggestions that serve all equally without prejudice regarding nationality, faith tradition, gender, sexual orientation, disabilities or limitations. We need to step up and step out with leadership pathways that uplift souls to come out of darkness into the light. Network, learn, inspire and activate strategies that move the world forward in a positive direction. I personally will miss being there in person but send virtual greetings of love and light to the electromagnetic waves that surround us in person & virtually. Enjoy the connections!

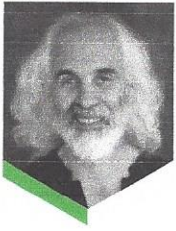
Yours Sincerely

Mary Jo Bulbrook

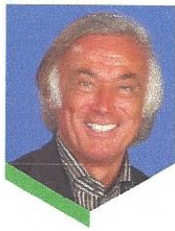
Akamai University, United States



Keynote Speakers



Riehl Andre
UEY, France



Kenneth R. Pelletier
University of California School
of Medicine, United States



Girish Momaya
Maharishi European Research
University, Netherlands



Mary Jo Bulbrook
Akamai University,
United States



Charles Shang
Baylor College of Medicine,
United States



Hideko Pelzer
Acupuncture and Integrative
Medicine College,
United States



Michelle Gellis
Acupuncture Physician,
United States



Neil Gumenick
Institute of Classical Five-
Element Acupuncture Inc,
United States



Sunita Teckchand
The Holistic Alternatives FZ
LLC, United Arab Emirates



Leonel Pereira
University of Coimbra,
Portugal



Michael Kuzeff
Albury Central Medical Clinic,
Australia



Zhenhuan Liu
University of Chinese
Medicine, China



Lukui Chen
Integrated Hospital of TCM,
China

Thank You
All...

Heart centered initiative - Restoring hope & promoting healing

A heart-centered initiative program focusing on Satir transformational change model & Complementary Integrative Health (CIH) approaches empowering individuals, families, communities to access their inner power to overcome obstacles to their individual, family, community, national, international health, & wellbeing. Wars & natural disasters caused by climate change have impacted the world. We are ONE. Each person, family, community, and nations deserve the right to plan, honor the integrity of its people, its culture & secure self-governance with equal opportunity for all.

Description: Training example includes scientific research documenting effective strategies for improved health and wellbeing that is culturally specific and addressed national and international needs and priorities for global healing.

- Support & Help for Recovery from Trauma, Disasters, & War: For Children, Couples, Families, Businesses, Organizations, Communities, & Nations
- Experience Satir Transformational Seed Model with Energy Therapy - Helping Individuals, Families & Organization Survive & Thrive
- Complementary Integrated Health (CIH) Self-Care & Wellness for Health Professionals, Service Providers & Volunteer Helpers

Audience Take Away Notes

- Describe scientific research addressing problems from war, disasters, shootings, relocation, abuse, misuse of power, segregation, affluent vs poor imbalance, extreme grief and losses of all kinds
- Capturing Your Story for Health, Healing & Renewal
- Expand Intuitive/Spiritual Development to create hope & healing
- Practice Interventions bring Balance & Healing
- Evaluate Positive Growth & Change



Dr. Mary Jo Bulbrook, BSN, RN, MEd, EdD, CEMP/S/I, CIH

Akamai University, President, Dean of Institute for CAM Studies, Founder & President of Energy Medicine Partnerships Affiliate, CEO of Global Healing Alliance Affiliate, USA

Biography

Dr. Mary Jo Bulbrook is uniquely qualified due to her lifetime commitment as a dedicated practitioner and university academic with over 50+ years in Higher Education. She is a master teacher/practitioner/educator with grounded theory and storytelling research serving throughout the USA, Canada, Australia, New Zealand, South Africa, Peru, Chile, and Argentina. Her leadership includes Healing Touch, Transform Your Life with Energy Medicine, and Touch for Health, Bioenergetic Wellness, Transpersonal Psychology and Energy Psychology. Currently she is president of Akamai University leading this innovative program to address worldwide challenges in practice, education, and research.

Speakers



Jung Han Lee
Won Kwang University, Korea,
Republic of



Kamaka Kassimu
Ifakara Health Institute,
Tanzania, United Republic of



Karol Chandler-Ezell
Stephen F Austin State
University, United States



Komgrit Eawsakul
Walailak University, Thailand



**Krashenyuk Albert
Ivanovich**
Academy of Hirudotherapy,
Russian Federation



Leslie Whitcomb
Akamai University, United
States



Li Li
Shanghai Academy of
Traditional Chinese Medicine,
China



Lobsang Dhondup
Global Institute for Tibetan
Medicine, United States



Mangala Kotnis
Private Practitioner, India



Mara Bishop
Whole Spirit LLC, United
States



Maria Penchyna
Technological of Monterrey,
Mexico



Melinda Connor
Akamai University, United
States



Michele Quintin
Center for Relaxotherapy and
Prevention, Belgium



Mohammad Kamil
Lotus Holistic Health Institute,
United Arab Emirates



Mohanlal Ghosh
Hooghly Mohsin College, India



**Paola Santander
Gonzalez**
Juan N Corpas University
Foundation, Colombia



Pongrapee Laorodphun
Chiang Mai University,
Thailand



Poonam Singhal
Indian Institute of Technology,
India



Punitha Isaac Samraj
Endeavour College of Natural
Health, Australia



Qiong Di Wu
Q&D Acupuncture & Herb
Clinic, Ireland



Rishu sharma
Board of Ayurvedic & Unani
Systems of Medicine, India



**Roberto Campos
Navarro**
National Autonomous
University of Mexico, Mexico



Ryszard Kozlowski
Journal of Natural Fibers
Editor-in-chief, Poland



Sarunpron Khruegsai
Mae Fah Luang University,
Thailand



Shahryar Eghtesadi
Azad University, Iran (Islamic
Republic of)



Dr. Melinda H. Connor, D.D., Ph.D. AMP, FAM, EHP-C

Director of Research, Akamai University, Hilo, Hawaii, USA

Triggering the repair of T6 spinal paraplegia to L5/S1 with resonance modulation energy healing

All healing may offer us a unique opportunity to discover the range and capacity of human potential manifested in daily life. Spinal Paraplegia is one of the many difficult injury areas which our scientific community is seeking to understand and resolve. This case of incomplete T6 Spinal Paraplegia had a projected maximum life-time recovery of T9 and in under a year has resolved to a level of L5, S1. Resonance Modulation Distance Healing was used to support and enhance this healing process. The case under discussion offers us insight into the universal aspects of the human healing process.

Audience Take Away Notes

- Specific techniques will be discussed which were used in this case
- Support greater understanding of the potential of the human body to heal
- It is hoped that a search for the chemical the body uses to control spinal cord cells will be found seen in this healing process which holds a potential for people all over the world to benefit
- Discussion about the sounds produced by the human body is relevant information to support body health

Biography

Dr. Melinda H. Connor, D.D., PH.D., AMP, FAM, EHP-C holds degrees from Harvard, Wellesley, University of San Francisco, American Military University, California Coast University and University of Arizona. She was a NIH T-32 post doctoral research fellow at the University of Arizona in the Program in Integrative Medicine. Dr. Connor is the current Director of Research, Akamai University. Board certified, she is a fellow of the American Alternative Medicine Association, and the Royal Society of Medicine (UK). Dr. Connor has written ten books and numerous papers.



Leslie Whitcomb PhD.

The Department of Humanitarian Sustainability, Global Equity and Inclusion
Akamai University, Durham, North Carolina, USA

Integrating indigenous ancestral medicine with mental health and acupuncture protocols

This presentation uses a complexity science approach to explore Integrating Indigenous Ancestral Medicine with Mental Health and Acupuncture Protocols. It is supported by case study experience and empirical research bibliographies. The case study experience includes healing modalities of North American ancestral, transgenerational healing practice, South American Pacha Mama Practice, mainstream mental health practice, and co adjunct collaborations of Indigenous Ancestral Medicine with Mental Health modalities and Acupuncture treatment. Indigenous Ancestral Medicine is a medicine of relationship. Mental Health approaches are designed to heal relationship: with self, other, family, community and society. Acupuncture is a traditional medicine and a science of relationship – the relationship of the body's meridians, organs, body processes and chi into a larger equilibrium, with health as the optimal state resulting from this equilibrium. Experience of these three systems of medicine in harmonious practice with each other will be facilitated for participants, by the presenter, in zoom format. The presenter will then provide a brief touch point for participants with body based Indigenous physiological patterns, Mental Health relational elements and Acupuncture Meridian systems. The presenter will then clarify didactic understandings of experiential learning; to include one case study in which all the above modalities were employed to address issues of transgenerational trauma. These issues had presentation in fractures of ancestral world view for meaning making, ruptures in relationship of self to self, and self to other, family, kin, community and nature; finally, they had presentations of disequilibrium in five elements acupuncture meridian chi and presentations of hormonal, autoimmune, digestive, and whole health challenges. Following the didactic presentation, participants will be given interactive charts to integrate tools from the presentation into self-efficacy practices to share with their population of service. These mapping exercises are designed to allow practitioners from a variety of health and well-being modalities to consider how their own modalities may become more efficacious and sustainable, through understanding of and respect for Indigenous Ancestral Medicine.

Audience Take Away Notes

- The presentation will facilitate proactive tools of self-equilibrium in the modalities covered – a whole practitioner is an effective practitioner. These tools are transportable to work with clients in the modalities covered. They have been researched to be effective in creating opportunities for health recovery, on all levels of holistic practice for the modalities covered
- The structure of the presentation, the tools accessed through practice within the presentation and transferrable tools to practice will provide participants with two key practice enrichment competencies. The first competency rests in practice of micro skills of adaptive and responsive thinking, perceiving, sensing and intuitively responding with empathy and accuracy. This enhances the practitioner, in any of the modalities covered, to enrich their efficacy in assessing clients and designing self-efficacy based self-care plans for clients to supplement professional practice tools. The second competency rests

in the skills of translational professional agility for translating energy based and relational practices of medicine and mental health, into greater capacities to access research bases and practical skills resources of medicine and mental health

Biography

Leslie Whitcomb, M.Sc., Ph.D. is a proud carrier of her Ketooweh Lenni Lenape ancestral medicine heritage. Her dual heritage, as both Indigenous and white has informed her professional work in Mental Health, Indigenous Ancestral Medicine and co adjunct facilitation with practitioners of Acupuncture, Acupressure and Homeopathy for thirty-five years. Leslie works in partnership with regional ecosystems, international practitioners and academic scholars. Her research and collaboration has made contributions in K-12 school systems, graduate programs, social services training programs and in private practice. She is currently faculty at Akamai University, Engineering Leadership Skills Clinic Facilitator at Cornell University, and in private family facilitation practice.